

LOGOS
APRIL 2024
PRICE
LIST

Molteni & C

Prices quoted in Euro.
VAT, IVA, MOMS, MwSt, BTW, TVA and any value added taxes not included.
Designing, transport and assembly not included.
Molteni&C Spa reserves the right to makes changes to its products, sizes
and materials at any time and without prior notice.

Molteni & C

LOGOS

VINCENT VAN DUYSSEN
2024



Modularity, functionality, and lightness are the hallmarks of Molteni&C's first fully modular living room wall unit system. This innovative system, designed by Vincent Van Duysen, offers unparalleled versatility and customization, both in composition and finishes. Logos emerges as a centerpiece in the 2024 Molteni&C Collection. Its "sleek and simple" modular composition, combined with a harmonious blend of materials, offers endless configurations to suit individual tastes and functional needs. The design introduces a fresh approach to space, characterized by the sleek vertical dividers that define its modularity and aesthetics. Whether placed on the ground, mounted on the wall, or suspended with a trestle base in metal finishes, Logos adapts effortlessly to any setting. Vertical flexibility is key, as modules can vary in height to suit the functionality of each wall area. The sides become a defining feature, seamlessly connecting the base with the upper shelf. A touch of illumination can elevate this wall unit system further, with warm 2700 lumen LED top lighting set in the rear to create captivating reflections that interact with the diverse materials and finishes.

Finishes

All finishes in the Logos project were chosen to allow for the utmost versatility in colours and materials, in full harmony with the product design and construction characteristics.

Notes

Any requests for finishes other than those listed below can be accepted only following confirmation of feasibility from the Molteni&C technical department.

finishes	matt lacquer colours	3D matt lacquer colours	wood	glossy lacquer colours	pewter colour / iris	transparent extra clear glass	stopsol glasses	BLEND fabric	bronze mirror	marble (matt finish)	black melamine	grey saffiano
module back	•		•	•				•	•			
structure cover (under top)					•							
front chain												
panel											•	
side panel th 14 / base th 40	•		•									
glass side panel th 14 / glass door					•							
profile												
glass						•	•					
wooden hinged door th 25 / drawer fronts th 25 / central shelf above drawer th 20	•	• excluding shief	•	•								
TV module back	•		•					•				
glass shelf th 8						•						
wooden shelf th 14	•		•	•								
glass shelf with profile th 14					•							
profile												
glass						•						
internal drawer unit	•		•									
single material top th 40 / TV module central shelf th 40	•		•							•		
top with frame th 40					•							
frame												
inserts	•		•							•		
metal base					•							
drawer interior												•

colours

Matt lacquer
3D matt lacquer
 BC chalk white
 PE pearl
 DN dune
 PL platinum
 NE black
 AT anthracite
 SE mustard
 SI silica
 DO dolomite grey
 AL clay
 MK moka
 CZ light blue grey
 SA sand
 RU ruby
 PX pewter colour
 RX copper
 TO dove grey
 PR petroleum blue
 BG burgundy
 LS london sky
 SU stardust
 ML moonlight
 SP spice
 PG pine green
 AW almond white
 CP cappuccino
 IX iris

Glossy lacquer
 BC chalk white
 PE pearl
 DN dune
 PL platinum
 NE black
 AT anthracite
 SE mustard
 SI silica
 DO dolomite grey
 AL clay
 MK moka
 CZ light blue grey
 SA sand
 RU ruby
 PX pewter colour
 RX copper
 TO dove grey
 PR petroleum blue
 BG burgundy
 LS london sky
 SU stardust
 ML moonlight
 SP spice
 PG pine green
 AW almond white
 CP cappuccino
 IX iris

Woods
 RF graphite oak
 RN black oak
 RC coffee oak
 RS sunrise oak

Stopsol glasses
 transparent
 bronze
 silver

BLEND fabric
 bark brown
 moss green
 olive green
 oxide orange
 vanilla

Marble (matt finish)
 breccia capraia
 calacatta
 emperador dark
 Sahara noir
 black marquina
 red lepanto

Structural modularity H 338 / 487 / 636

With these modules, compositions with height differences can be created without doubling the side panel.

Notes

No reductions of any kind are allowed.
The following may not be used in hanging compositions:
- monochrome marble top th 40
- glass side panel

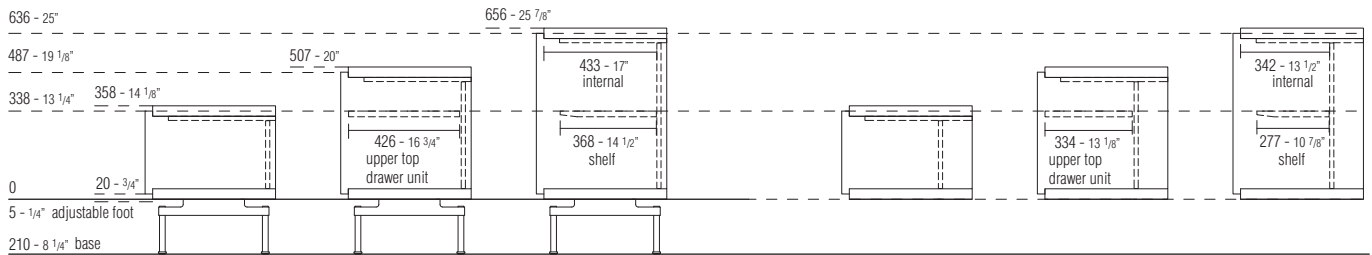
Maximum composition size with base 2934 mm

Modules with glass side panels can be closed with hinged doors and fitted with shelves.

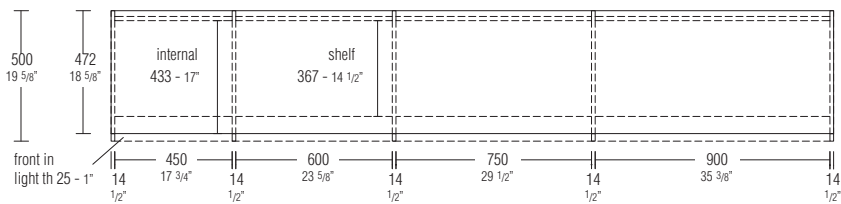
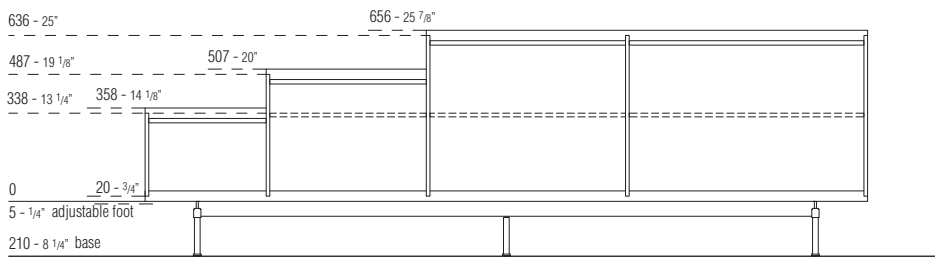
Side view

Floor-standing structures / Base

Wall-mounted structures



Front view / plan



Modularity H 1230

In the 1230 height, a special element W 1800 is available for inserting a television:
TV module.
The change in height is provided for by combining two compositions.

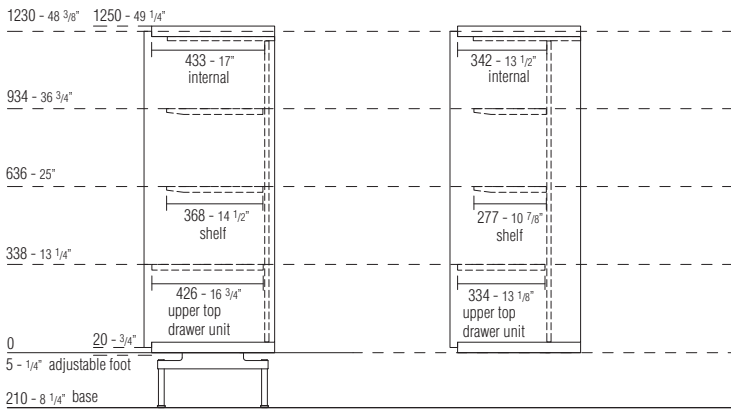
Notes

No reductions of any kind are allowed.
The following may not be used in hanging compositions:
- monochrome marble top th 40
- glass side panel
- internal drawer units
Maximum composition size with base 2934 mm
Modules with glass side panels can be closed with hinged doors and fitted with shelves.

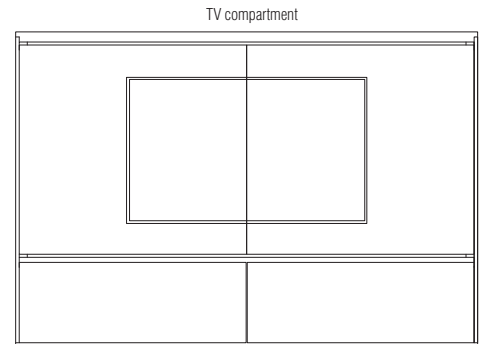
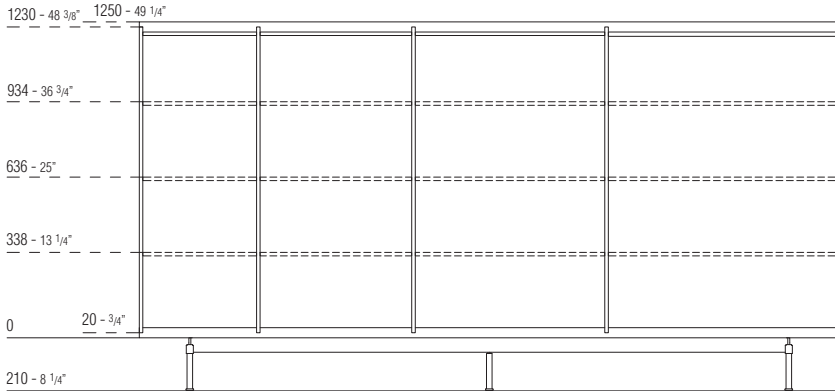
Side view

Floor-standing structures / Base

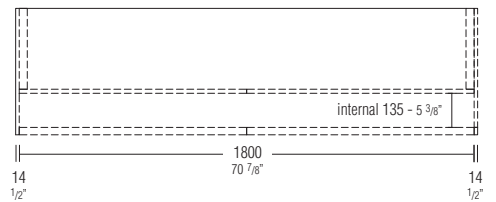
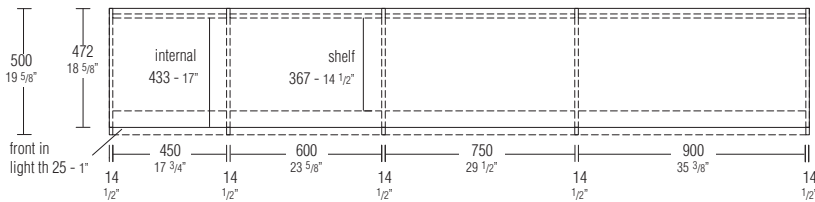
Wall-mounted structures



Front view / plan



The TV module is available only in the wall-mounted or floor-standing version with adjustable feet.
Never place it on a base



TAPE compartment / wire passage

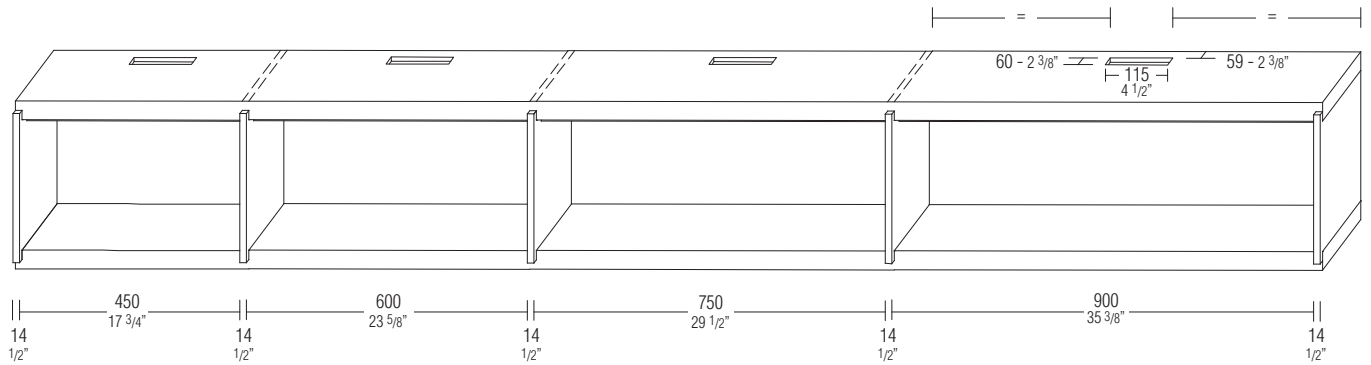
Logos is designed to accommodate HI-FI systems both visibly in the open compartments and hidden in dedicated TAPE compartments.

The sections below illustrate possible solutions.

Notes

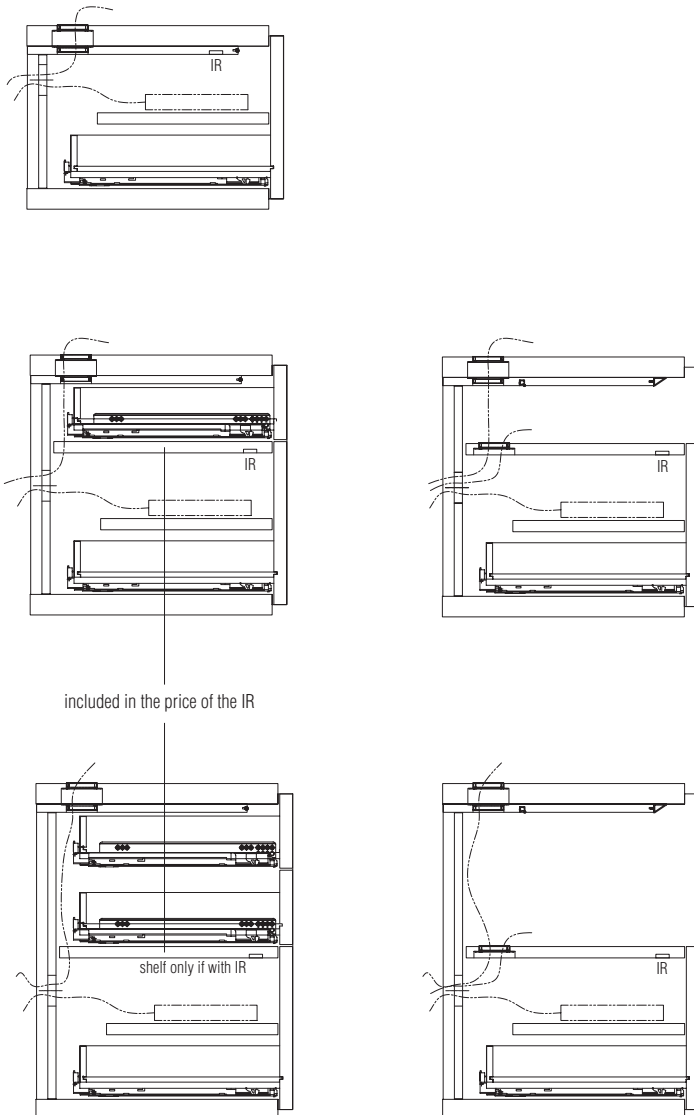
The position of the wire hole in the top is always at the centre of the underlying module to be wired, in both the monochrome version and the version with a metal frame. Mirror and fabric back panels cannot be used with the TAPE compartment.

Wire hole position in the top

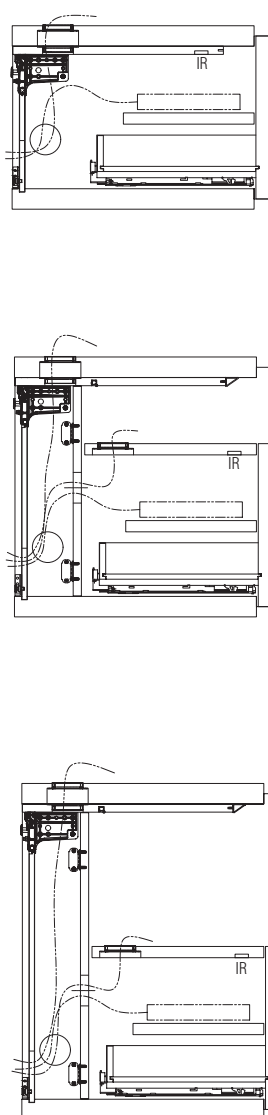


TAPE compartment sections / wire passage

Floor-standing / on a base



Wall-mounted

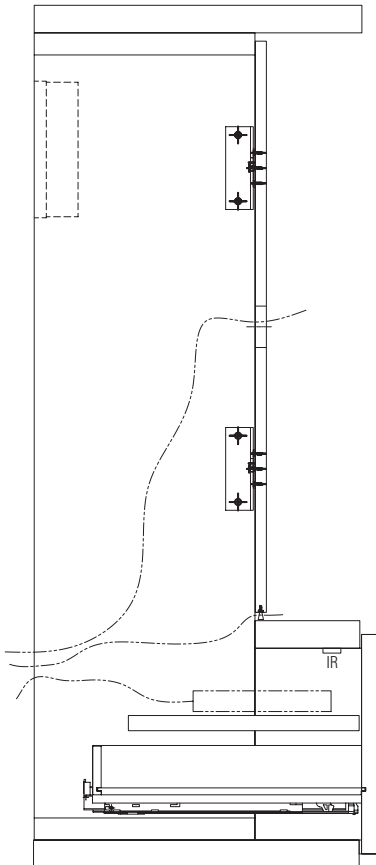
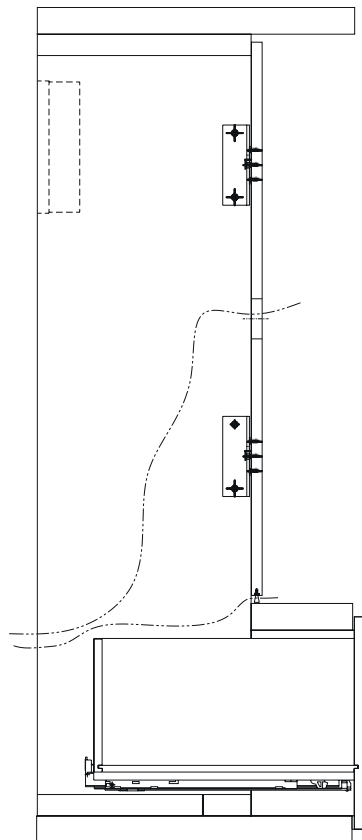


Modularity H 1230 - TV module

The examples below show how the TV module makes it simple and functional to mount the TV (avoiding work on the walls) and connect HI-FI devices. The module provides integrated and elegant solutions in all living or dining areas.

Notes

The TV module is available only in the wall-mounted or floor-standing version with adjustable. **Never place it on a base.**

TAPE compartment sections / wire passage**Floor-standing / wall-mounted
with TAPE compartment****Floor-standing / wall-mounted
without TAPE compartment**

Logos

Modules

H 343 - 13 1/2" floor-standing or H 338 - 13 1/4" for base

Notes

No reductions of any kind are possible.
For *W 750 and 900 drawers inserted in structures with wooden backrests, the TAPE compartment can be used (as shown in the diagram on page 6), adding the price of the shelf and TV receiver.
Only open compartments can be made with glass side panels.

Structure

H 318 - 12 1/2" for base
H 323 - 12 3/4" floor-standing
with adjustable feet
D 500 - 19 5/8"

W 450 - 17 3/4"

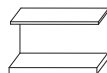
W 600 - 23 5/8"

W 750 - 29 1/2"

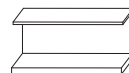
W 900 - 35 3/8"



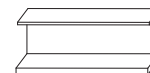
matt lacquer base wood base



matt lacquer base wood base



matt lacquer base wood base



matt lacquer base wood base

back panel

MOT0403

MOT0603

MOT0703

MOT0903

	W 450 - 17 3/4"		W 600 - 23 5/8"		W 750 - 29 1/2"		W 900 - 35 3/8"	
matt lacquer colours	350	390	385	433	423	480	459	526
glossy lacquer colours	367	407	418	466	470	527	521	588
wood	365	405	408	456	451	508	494	561
bronze mirror	378	418	414	462	459	516	505	572
BLEND fabric	350	390	388	436	444	501	485	552
supplementary cost for LED cover	27	27	34	34	40	40	47	47

Front

with drawer

W 450 - 17 3/4"

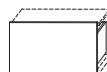
W 600 - 23 5/8"

W 750 - 29 1/2"

W 900 - 35 3/8"



CTN0403A



CTN0603A



CTN0703A



CTN0903A

	W 450 - 17 3/4"	W 600 - 23 5/8"	W 750 - 29 1/2"	W 900 - 35 3/8"
matt lacquer colours	257	269	296	314
3D matt lacquer colours	272	284	336	351
glossy lacquer colours	320	360	412	453
wood	300	323	358	387
*TAPE compartment shelf	-	-	218	243
*TV signal transceiver (ETV1L)	-	-	434	434

Central sides wood
th 14 - 1/2"

H 318 - 12 1/2"



SPTC03

	H 318 - 12 1/2"
matt lacquer colours	144
wood	177

Wood or glass
side panels th 14 - 1/2"

The profile of the glass side panel is available in pewter colour and iris finish



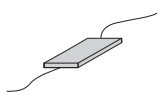
SPTL03

	H 318 - 12 1/2"
matt lacquer colours	144
wood	177
extra-clear transparent glass	343
transparent / bronze / silver stopsol glass	357

LED accessories

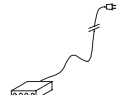
Calculate the total power of the composition for the use of one or more power supply units

power supply unit 100W



EAL1
286

connector (per 1 composition up to 2 power supply units)



ECO1
42

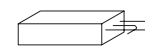
radio control kit with brightness setting (1 per power supply unit) optional



EKRR1
264

DALI kit (for DOMOTICA)

n. 1 for each power supply unit cannot be used with radio remote control



EKDA1
99

Power per LED

mm	W
450	2,7
600	3,6
750	4,5
900	5,4
1800	10,8

K 2700

Modules

H 492 - 19 3/8" floor-standing or H 487 - 19 1/8" for base

Notes

No reductions of any kind are possible.
For *W 750 and 900 drawers inserted in structures with wooden backrests, the TAPE compartment can be used (as shown in THE diagram on page 6), adding the price of the shelf, TV receiver and any wire holes in the central drawer unit surface.
With 3D matt lacquer fronts the top on the unit is matt lacquer.

Structure

H 467 - 18 3/8" for base

H 472 - 18 5/8" floor-standing
with adjustable feet

D 500 - 19 5/8"

price does not
include shelf

back panel

matt lacquer colours

glossy lacquer colours

wood

bronze mirror

BLEND fabric

supplementary cost for LED cover

W 450 - 17 3/4"

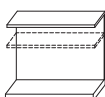


matt lacquer
base

wood
base

MOT0404

W 600 - 23 5/8"

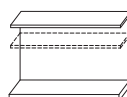


matt lacquer
base

wood
base

MOT0604

W 750 - 29 1/2"

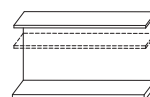


matt lacquer
base

wood
base

MOT0704

W 900 - 35 3/8"



matt lacquer
base

wood
base

MOT0904

356	396	392	440	443	500	491	558
398	438	457	505	524	581	590	657
381	421	427	475	485	542	542	609
396	436	446	494	501	558	553	620
371	411	415	463	488	545	536	603
27	27	34	34	40	40	47	47

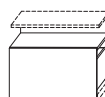
Front with drawer and open compartment

W 450 - 17 3/4"



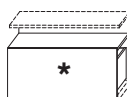
CTN0404A

W 600 - 23 5/8"



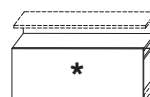
CTN0604A

W 750 - 29 1/2"



CTN0704A

W 900 - 35 3/8"



CTN0904A

shelf and drawer front

matt lacquer colours

3D matt lacquer colours

glossy lacquer colours

wood

*TAPE compartment shelf

*TV signal transceiver (ETV1L)

*drawer unit central shelf wire hole (EPA3)

383	410	452	488
398	425	492	525
495	568	653	728
474	521	586	646
		218	243
		434	434
		73	73

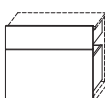
Front with 2 drawers

W 450 - 17 3/4"



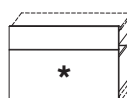
CTN0404B

W 600 - 23 5/8"



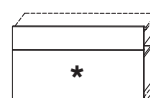
CTN0604B

W 750 - 29 1/2"



CTN0704B

W 900 - 35 3/8"



CTN0904B

drawer fronts

matt lacquer colours

3D matt lacquer colours

glossy lacquer colours

wood

*TAPE compartment shelf

*TV signal transceiver (ETV1L)

499	522	566	591
520	543	630	651
582	648	731	795
570	610	669	711

Front: hinged door, wood or glass

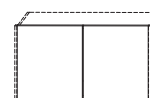
The glass door profile is
available in pewter colour
and iris finishes

W 450 - 17 3/4"



AB0404

W 900 - 35 3/8"



AB0904

matt lacquer colours

3D matt lacquer colours

glossy lacquer colours

wood





extra-clear transparent glass

transparent / bronze / silver stopsol glass

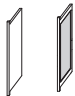
255	510
282	564
353	706
309	618
414	828
429	858

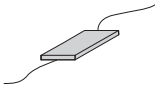
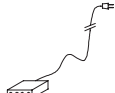


Notes

- Modules with glass side panels can be closed with hinged doors and fitted with shelves.
- LEDs cannot be fitted with the 8 cm thick glass shelf.

Shelves glass th 8 - 3/8" wood th 14 - 1/2" glass with profile th 14 - 1/2"	W 450 - 17 3/4"	W 600 - 23 5/8"	W 750 - 29 1/2"	W 900 - 35 3/8"
The glass shelf profile th 14 is available in pewter colour and iris finish				
	RIT04	RIT06	RIT07	RIT09
extra clear glass th 8	74	82	92	102
matt lacquer colours	132	142	170	180
glossy lacquer colours	188	222	271	300
wood	199	217	248	275
with profile th 14 - extra clear glass	239	253	274	280
supplementary cost for shelf LED	38	47	57	67

Wood central sides th 14 - 1/2"	H 467 - 18 3/8"
	
	SPTC04
matt lacquer colours	156
wood	203

Wood or glass side panels th 14 - 1/2"	H 467 - 18 3/8"
The profile of the glass side panel is available in pewter colour and iris finish	
	SPTL04
matt lacquer colours	156
wood	203
extra-clear transparent glass	413
transparent / bronze / silver stopsol glass	428

LED accessories	power supply unit 100W	connector (per 1 composition up to 2 power supply units)	radio control kit with brightness setting (1 per power supply unit) optional	DALI kit (for DOMOTICA) n. 1 for each power supply unit cannot be used with radio remote control	Power per LED												
Calculate the total power of the composition for the use of one or more power supply units					<table border="1"> <thead> <tr> <th>mm</th> <th>W</th> </tr> </thead> <tbody> <tr> <td>450</td> <td>2,7</td> </tr> <tr> <td>600</td> <td>3,6</td> </tr> <tr> <td>750</td> <td>4,5</td> </tr> <tr> <td>900</td> <td>5,4</td> </tr> <tr> <td>1800</td> <td>10,8</td> </tr> </tbody> </table>	mm	W	450	2,7	600	3,6	750	4,5	900	5,4	1800	10,8
mm	W																
450	2,7																
600	3,6																
750	4,5																
900	5,4																
1800	10,8																
	EAL1	ECO1	EKRR1	EKDA1	K 2700												
	286	42	264	99													

Logos

Modules

H 641 - 25 1/4" floor-standing or H 636 - 25" for base

Notes

No reductions of any kind are possible.
For *W 750 and 900 drawers inserted in structures with wooden backrests, the TAPE compartment can be used (as shown in the diagram on page 6), adding the price of the shelf, TV receiver and any wire holes in the central drawer unit surface.
With 3D matt lacquer fronts the top on the unit is matt lacquer.

Structure

H 616 - 24 1/4" for base

H 621 - 24 1/2" floor-standing with adjustable feet

D 500 - 19 5/8"

price does not include shelf

back panel

matt lacquer colours

glossy lacquer colours

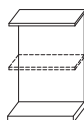
wood

bronze mirror

BLEND fabric

supplementary cost for LED cover

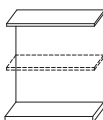
W 450 - 17 3/4"



matt lacquer base wood base

MOT0406

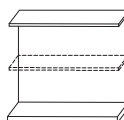
W 600 - 23 5/8"



matt lacquer base wood base

MOT0606

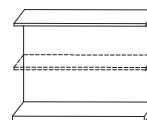
W 750 - 29 1/2"



matt lacquer base wood base

MOT0706

W 900 - 35 3/8"



matt lacquer base wood base

MOT0906

362	402	416	464	471	528	524	591
429	469	505	553	582	639	659	726
369	436	460	508	526	583	592	659
416	456	475	523	536	593	596	663
394	434	445	493	526	583	576	643
27	27	34	34	40	40	47	47

Front with drawer and open compartment

shelf and drawer front

matt lacquer colours

3D matt lacquer colours

glossy lacquer colours

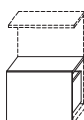
wood

*TAPE compartment shelf

*TV signal transceiver (ETV1L)

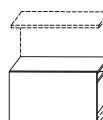
* drawer unit central shelf wire hole (EPA3)

W 450 - 17 3/4"



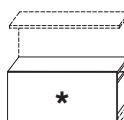
CTN0406A

W 600 - 23 5/8"



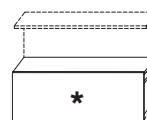
CTN0606A

W 750 - 29 1/2"



CTN0706A

W 900 - 35 3/8"



CTN0906A

383	410	452	488
398	425	492	525
495	568	653	728
474	521	586	646
		218	243
		434	434
		73	73

Front with 3 drawers

drawers

matt lacquer colours

3D matt lacquer colours

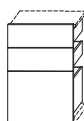
glossy lacquer colours

wood

*TAPE compartment shelf

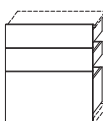
*TV signal transceiver (ETV1L)

W 450 - 17 3/4"



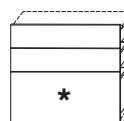
CTN0406C

W 600 - 23 5/8"



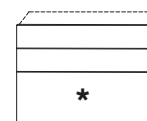
CTN0606C

W 750 - 29 1/2"



CTN0706C

W 900 - 35 3/8"



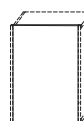
CTN0906C

741	775	836	868
768	802	924	951
844	936	1.050	1.137
840	897	980	1.035
-	-	218	243
		434	434

Front: hinged door, wood or glass

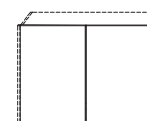
The glass door profile is available in pewter colour and iris finishes

W 450 - 17 3/4"



AB0406

W 900 - 35 3/8"







AB0906

270	540
307	614
401	802
338	676
427	854
447	894

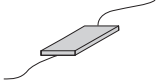



Notes

- Modules with glass side panels can be closed with hinged doors and fitted with shelves.
- LEDs cannot be fitted with the 8 cm thick glass shelf.

Shelves glass th 8 - 3/8" wood th 14 - 1/2" glass with profile th 14 - 1/2"	W 450 - 17 3/4"	W 600 - 23 5/8"	W 750 - 29 1/2"	W 900 - 35 3/8"
The glass shelf profile th 14 is available in pewter colour and iris finish				
	RIT04	RIT06	RIT07	RIT09
extra clear glass th 8	74	82	92	102
matt lacquer colours	132	142	170	180
glossy lacquer colours	188	222	271	300
wood	199	217	248	275
with profile th 14 - extra clear glass	239	253	274	280
supplementary cost for shelf LED	38	47	57	67

Wood central sides th 14 - 1/2"	H 616 - 24 1/4"
	
	SPTC06
matt lacquer colours	180
wood	242

Wood or glass side panels th 14 - 1/2"	H 616 - 24 1/4"
The profile of the glass side panel is available in pewter colour and iris finish	
	SPTL06
matt lacquer colours	180
wood	242
extra-clear transparent glass	434
transparent / bronze / silver stopsol glass	455

LED accessories	power supply unit 100W	connector (per 1 composition up to 2 power supply units)	radio control kit with brightness setting (1 per power supply unit) optional	DALI kit (for DOMOTICA) n. 1 for each power supply unit cannot be used with radio remote control	Power per LED												
Calculate the total power of the composition for the use of one or more power supply units					<table border="1"> <thead> <tr> <th>mm</th> <th>W</th> </tr> </thead> <tbody> <tr> <td>450</td> <td>2,7</td> </tr> <tr> <td>600</td> <td>3,6</td> </tr> <tr> <td>750</td> <td>4,5</td> </tr> <tr> <td>900</td> <td>5,4</td> </tr> <tr> <td>1800</td> <td>10,8</td> </tr> </tbody> </table> <p>K 2700</p>	mm	W	450	2,7	600	3,6	750	4,5	900	5,4	1800	10,8
mm	W																
450	2,7																
600	3,6																
750	4,5																
900	5,4																
1800	10,8																
	EAL1	ECO1	EKRR1	EKDA1													
	286	42	264	99													

Modules

H 1235 - 48 5/8" floor-standing or H 1230 - 48 3/8" for base

Notes

No reductions of any kind are possible.
With modules H 1230 / 1235, the change in height is provided for by combining two compositions.
With 3D matt lacquer fronts the top on the unit is matt lacquer.

Structure

H 1210 - 47 5/8" for base
H 1215 - 47 7/8" floor-standing
with adjustable feet
D 500 - 19 5/8"

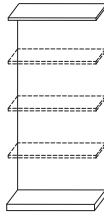
price does not
include shelf

W 450 - 17 3/4"



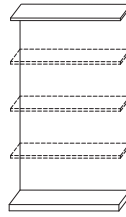
matt lacquer
base wood
base

W 600 - 23 5/8"



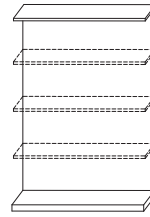
matt lacquer
base wood
base

W 750 - 29 1/2"



matt lacquer
base wood
base

W 900 - 35 3/8"



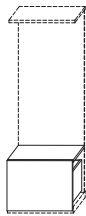
matt lacquer
base wood
base

back panel

	MOT0412		MOT0612		MOT0712		MOT0912	
matt lacquer colours	433	473	501	549	571	628	641	708
glossy lacquer colours	572	612	685	733	802	859	919	986
wood	504	544	592	640	682	739	773	840
bronze mirror	515	555	594	642	677	734	759	826
BLEND fabric	505	545	564	612	687	744	750	817
supplementary cost for LED cover	27	27	34	34	40	40	47	47

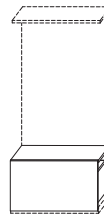
Front with drawer

W 450 - 17 3/4"



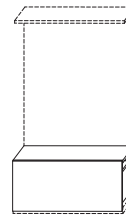
CTN0412A

W 600 - 23 5/8"



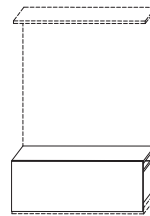
CTN0612A

W 750 - 29 1/2"



CTN0712A

W 900 - 35 3/8"



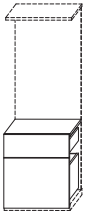
CTN0912A

shelf and drawers front

matt lacquer colours	383	410	452	488
3D matt lacquer colours	398	425	492	525
glossy lacquer colours	495	568	653	728
wood	474	521	586	646

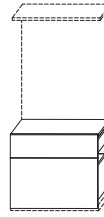
Front with 2 drawers

W 450 - 17 3/4"



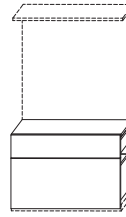
CTN0412B

W 600 - 23 5/8"



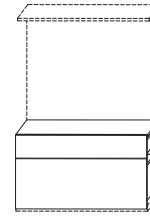
CTN0612B

W 750 - 29 1/2"



CTN0712B

W 900 - 35 3/8"



CTN0912B

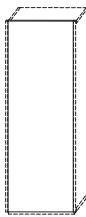
shelf and drawers front

matt lacquer colours	625	663	722	765
3D matt lacquer colours	646	684	786	825
glossy lacquer colours	757	856	972	1.070
wood	744	808	897	970

Front: hinged door, wood or glass

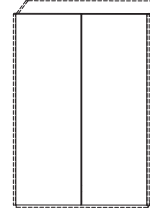
The glass door profile is
available in pewter colour
and iris finishes

W 450 - 17 3/4"



AB0412

W 900 - 35 3/8"



AB0912

matt lacquer colours	340	680
3D matt lacquer colours	415	830
glossy lacquer colours	597	1.194
wood	468	936
extra-clear transparent glass	531	1.062
transparent / bronze / silver stopsol glass	570	1.140

Notes

- Internal drawers cannot be inserted with glass side panels.
- Modules with glass side panels can be closed with hinged doors and fitted with shelves.
- LEDs cannot be fitted with the 8 cm thick glass shelf.

Shelves

glass th 8 - 3/8"

wood th 14 - 1/2"

glass with profile th 14 - 1/2"

The glass shelf profile th 14 is available in pewter colour and iris finish

W 450 - 17 3/4"

W 600 - 23 5/8"

W 750 - 29 1/2"

W 900 - 35 3/8"



RIT04

RIT06

RIT07

RIT09

extra clear glass th 8

74

82

92

102

matt lacquer colours

132

142

170

180

glossy lacquer colours

188

222

271

300

wood

199

217

248

275

with profile th 14 - extra clear glass

239

253

274

280

supplementary cost for shelf LED

38

47

57

67

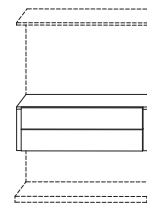
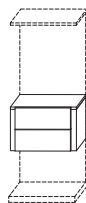
Internal

drawer unit

Can only be used inside wooden or glass hinged doors

W 450 - 17 3/4"

W 900 - 35 3/8"



CTI04

CTI09

matt lacquer colours

822

940

wood

968

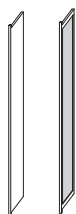
1.161

Wood or glass side panels th 14 - 1/2"

The profile of the glass side panel is available in pewter colour and iris finish

H 1210 - 47 5/8"

Wood central sides H 1210 - 47 5/8"
th 14 - 1/2"



SPTL12

SPTC12

matt lacquer colours

262

262

wood

383

383

extra-clear transparent glass

706

-

transparent / bronze / silver stopsol glass

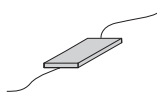
751

-

LED accessories

Calculate the total power of the composition for the use of one or more power supply units

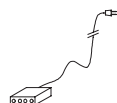
power supply unit 100W



EAL1

286

connector (per 1 composition up to 2 power supply units)



ECO1

42

radio control kit with brightness setting (1 per power supply unit) optional

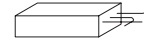


EKRR1

264

DALI kit (for DOMOTICA)

n. 1 for each power supply unit cannot be used with radio remote control



EKDA1

99

Power per LED

mm	W
450	2,7
600	3,6
750	4,5
900	5,4
1800	10,8

K 2700

TV module for floor-standing compositions

In the Logos system, a TV module is available for mounting televisions up to 75 inches.

Two TV module versions are available:

- With lower drawers (TVs up to 65 inches)
- Open (TVs up to 75 inches)

The TV stand module can be used in the centre or to the side in combination with other modules, or individually, closed in with side panels.

Notes

No reductions of any kind are possible.

With TV modules, the change in height is provided for by combining two compositions.

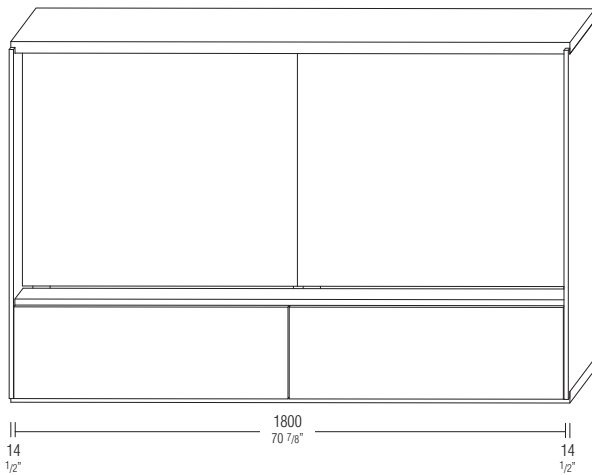
The TV module cannot be placed on the metal base.

The version with lower drawers always includes a th 40 central shelf, available in the finishes of the top.

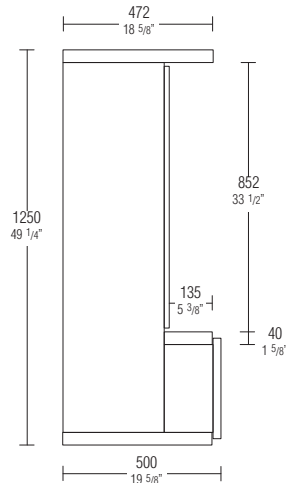
Not available with glass side panels.

The TAPE compartment can be used in the drawers (as shown in the diagram on page 7), adding the price of the shelf and TV receiver.

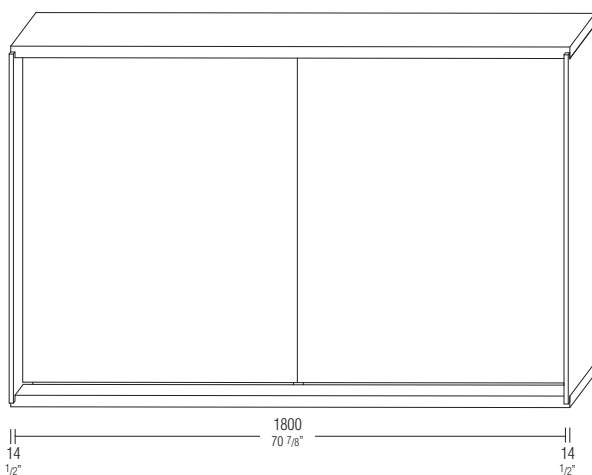
Version with lower drawers



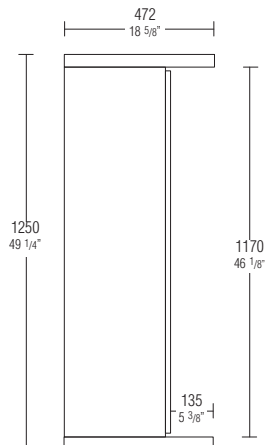
SIDE SECTION



Open version



SIDE SECTION

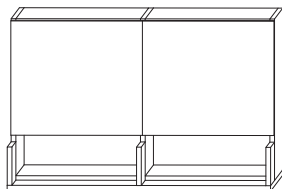


TV module
H 1235 - 48 5/8" floor-standing

TV module structure
H 1215 - 47 7/8" floor-standing
with adjustable feet
D 500 - 19 5/8"

price excluding
side or central panels
th 14 - 1/2"

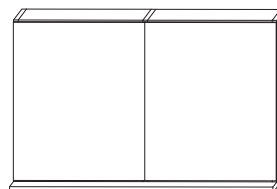
W 1800 - 70 7/8"
for inserting drawers



matt lacquer base wood base

MTT1812A

W 1800 - 70 7/8"
open



matt lacquer base wood base

MTT1812B

back panel

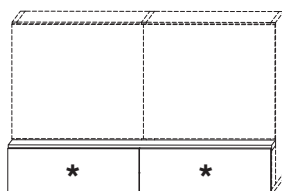
matt lacquer colours
wood
BLEND fabric

2.253	2.379
2.443	2.569
2.477	2.603

2.214	2.340
2.476	2.602
2.496	2.622

Front with drawer

W 1800 - 70 7/8"



matt lacquer front 3D matt lacquer front glossy lacquer front wood front

CTV1803A

central top th 40 - 1 5/8"

matt lacquer colours
wood
emperador dark / black marquina marble
Sahara noir / calacatta / red lepanto marble
breccia capraia marble
*TAPE compartment shelf
*TV signal transceiver (ETV1L)

834	908	1.112	980
908	982	1.186	1.054
1.317	1.391	1.595	1.463
1.531	1.605	1.809	1.677
1.676	1.750	1.954	1.822
243	243	243	243
434	434	434	434

Wood side panels
th 14 - 1/2"

H 1210 - 47 5/8"
TV module sides



SPTL12

matt lacquer colours
wood

262
383

Modules

H 338 - 13 1/4" wall-mounted

Notes

No reductions of any kind are possible.
For *W 750 and 900 drawers inserted in structures with wooden backrests, the TAPE compartment can be used (as shown in the diagram on page 6), adding the price of the shelf and TV receiver.

Wall-mounted structure H 318 - 12 1/2" D 500 - 19 5/8"

W 450 - 17 3/4"

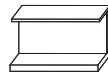
W 600 - 23 5/8"

W 750 - 29 1/2"

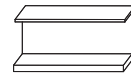
W 900 - 35 3/8"



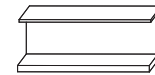
matt lacquer base wood base



matt lacquer base wood base



matt lacquer base wood base



matt lacquer base wood base

back panel

MOA0403

MOA0603

MOA0703

MOA0903

matt lacquer colours	350	390	385	433	423	480	459	526
glossy lacquer colours	367	407	418	466	470	527	521	588
wood	365	405	408	456	451	508	494	561
bronze mirror	378	418	414	462	459	516	505	572
BLEND fabric	350	390	388	436	444	501	485	552
supplementary cost for LED cover	27	27	34	34	40	40	47	47

Front with drawer

W 450 - 17 3/4"

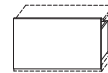
W 600 - 23 5/8"

W 750 - 29 1/2"

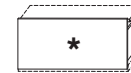
W 900 - 35 3/8"



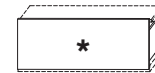
CAN0403A



CAN0603A



CAN0703A



CAN0903A

matt lacquer colours	257	269	296	314
3D matt lacquer colours	272	284	336	351
glossy lacquer colours	320	360	412	453
wood	300	323	358	387
*TAPE compartment shelf	-	-	218	243
*TV signal transceiver (ETV1L)	-	-	434	434

Wood side panels th 14 - 1/2"

H 318 - 12 1/2" central

H 318 - 12 1/2" side



SPAC03



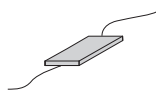
SPAL03

matt lacquer colours	238	238
wood	270	270

LED accessories

Calculate the total power of the composition for the use of one or more power supply units

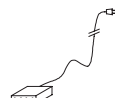
power supply unit 100W



EAL1

286

connector (per 1 composition up to 2 power supply units)



ECO1

42

radio control kit with brightness setting (1 per power supply unit) optional

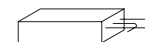


EKRR1

264

DALI kit (for DOMOTICA)

n. 1 for each power supply unit cannot be used with radio remote control



EKDA1

99

Power per LED

mm	W
450	2,7
600	3,6
750	4,5
900	5,4
1800	10,8

K 2700

Modules

H 487 - 19 1/8" wall-mounted

Notes

No reductions of any kind are possible.
For *W 750 and 900 drawers inserted in structures with wooden backrests, the TAPE compartment can be used (as shown in the diagram on page 6), adding the price of the shelf, TV receiver and any wire holes in the central drawer unit surface.
With 3D matt lacquer fronts the top on the unit is matt lacquer.

Wall-mounted structure H 467 - 18 3/8" D 500 - 19 5/8"

price does not include shelf

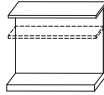
W 450 - 17 3/4"



matt lacquer base wood base

MOA0404

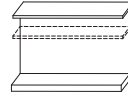
W 600 - 23 5/8"



matt lacquer base wood base

MOA0604

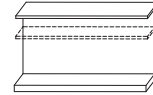
W 750 - 29 1/2"



matt lacquer base wood base

MOA0704

W 900 - 35 3/8"



matt lacquer base wood base

MOA0904

back panel

	MOA0404		MOA0604		MOA0704		MOA0904	
matt lacquer colours	356	396	392	440	443	500	491	558
glossy lacquer colours	398	438	457	505	524	581	590	657
wood	381	421	427	475	485	542	542	609
bronze mirror	396	436	446	494	501	558	553	620
BLEND fabric	371	411	415	463	488	545	536	603
supplementary cost for LED cover	27	27	34	34	40	40	47	47

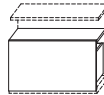
Front with drawer and open compartment

W 450 - 17 3/4"



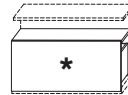
CAN0404A

W 600 - 23 5/8"



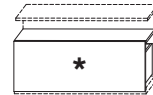
CAN0604A

W 750 - 29 1/2"



CAN0704A

W 900 - 35 3/8"



CAN0904A

shelf and drawer front

	CAN0404A		CAN0604A		CAN0704A		CAN0904A	
matt lacquer colours	379	397	397	437	437	468	468	468
3D matt lacquer colours	394	412	412	477	477	505	505	505
glossy lacquer colours	476	540	540	618	618	687	687	687
wood	464	501	501	556	556	610	610	610
*TAPE compartment shelf				218	218	243	243	243
*TV signal transceiver (ETV1L)				434	434	434	434	434
*drawer unit central shelf wire hole (EPA3)				73	73	73	73	73

Front: hinged door, wood or glass

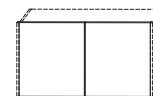
The glass door profile is available in pewter colour and iris finishes

W 450 - 17 3/4"



AB0404

W 900 - 35 3/8"









AB0904

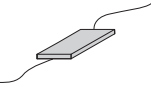



	AB0404	AB0904
matt lacquer colours	255	510
3D matt lacquer colours	282	564
glossy lacquer colours	353	706
wood	309	618
extra-clear transparent glass	414	828
transparent / bronze / silver stopsol glass	429	858

Notes

LEDs cannot be fitted with the 8 cm thick glass shelf.

Shelves glass th 8 - 3/8" wood th 14 - 1/2" glass with profile th 14 - 1/2"	W 450 - 17 3/4"	W 600 - 23 5/8"	W 750 - 29 1/2"	W 900 - 35 3/8"
The glass shelf profile th 14 - 1/2" is available in pewter colour and iris finish				
	RIA04	RIA06	RIA07	RIA09
extra clear glass th 8	74	82	92	102
matt lacquer colours	124	130	149	155
glossy lacquer colours	160	187	224	246
wood	189	202	223	239
with profile th 14 - extra clear glass	239	253	274	280
supplementary cost for shelf LED	38	47	57	67

Wood side panels th 14 - 1/2"	H 467 - 18 3/8" central	H 467 - 18 3/8" side
		
	SPAC04	SPAL04
matt lacquer colours	254	254
wood	300	300

LED accessories	power supply unit 100W	connector (per 1 composition up to 2 power supply units)	radio control kit with brightness setting (1 per power supply unit) optional	DALI kit (for DOMOTICA) n. 1 for each power supply unit cannot be used with radio remote control	Power per LED	
					mm	W
Calculate the total power of the composition for the use of one or more power supply units					450	2,7
	EAL1	ECO1	EKRR1	EKDA1	600	3,6
	286	42	264	99	750	4,5
					900	5,4
					1800	10,8
					K 2700	

Modules

H 636 - 25" wall-mounted

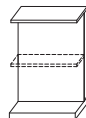
Notes

No reductions of any kind are possible.
For * W 750 and 900 drawers inserted in structures with wooden backrests, the TAPE compartment can be used (as shown in THE diagram on page 6), adding the price of the shelf, TV receiver and any wire holes in the central drawer unit surface.
With 3D matt lacquer fronts the top on the unit is matt lacquer.

Wall-mounted structure H 616 - 24 1/4" D 500 - 19 5/8"

price does not include shelf

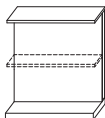
W 450 - 17 3/4"



matt lacquer base wood base

MOA0406

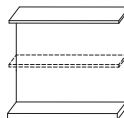
W 600 - 23 5/8"



matt lacquer base wood base

MOA0606

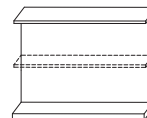
W 750 - 29 1/2"



matt lacquer base wood base

MOA0706

W 900 - 35 3/8"



matt lacquer base wood base

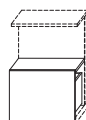
MOA0906

back panel

	MOA0406		MOA0606		MOA0706		MOA0906	
matt lacquer colours	362	402	416	464	471	528	524	591
glossy lacquer colours	429	469	505	553	582	639	659	726
wood	369	436	460	508	526	583	592	659
bronze mirror	416	456	475	523	536	593	596	663
BLEND fabric	394	434	445	493	526	583	576	643
supplementary cost for LED cover	27	27	34	34	40	40	47	47

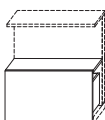
Front with drawer and open compartment

W 450 - 17 3/4"



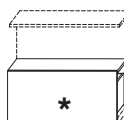
CAN0406A

W 600 - 23 5/8"



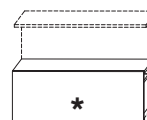
CAN0606A

W 750 - 29 1/2"



CAN0706A

W 900 - 35 3/8"



CAN0906A

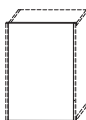
shelf and drawer front

	CAN0406A		CAN0606A		CAN0706A		CAN0906A	
matt lacquer colours	379	397	397	437	437	468	468	505
3D matt lacquer colours	394	412	412	477	477	505	505	505
glossy lacquer colours	476	540	540	618	618	687	687	687
wood	464	501	501	556	556	610	610	610
*TAPE compartment shelf				218	218	243	243	243
*TV signal transceiver (ETV1L)				434	434	434	434	434
*drawer unit central shelf wire hole (EPA3)				73	73	73	73	73

Front: hinged door, wood or glass

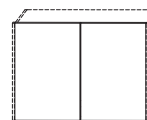
The glass door profile is available in pewter colour and iris finishes

W 450 - 17 3/4"



AB0406

W 900 - 35 3/8"









AB0906

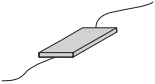
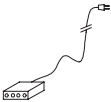

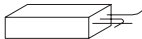
	AB0406	AB0906
matt lacquer colours	270	540
3D matt lacquer colours	307	614
glossy lacquer colours	401	802
wood	338	676
extra-clear transparent glass	427	854
transparent / bronze / silver stopsol glass	447	894

Notes

LEDs cannot be fitted with the 8 cm thick glass shelf.

Shelves glass th 8 - 3/8" wood th 14 - 1/2" glass with profile th 14 - 1/2"	W 450 - 17 3/4"	W 600 - 23 5/8"	W 750 - 29 1/2"	W 900 - 35 3/8"
The glass shelf profile th 14 - 1/2" is available in pewter colour and iris finish				
	RIA04	RIA06	RIA07	RIA09
extra clear glass th 8	74	82	92	102
matt lacquer colours	124	130	149	155
glossy lacquer colours	160	187	224	246
wood	189	202	223	239
with profile th 14 - extra clear glass	239	253	274	280
supplementary cost for shelf LED	38	47	57	67

Wood side panels th 14 - 1/2"	H 616 - 24 1/2" central	H 616 - 24 1/2" side
		
	SPAC06	SPAL06
matt lacquer colours	376	376
wood	496	496

LED accessories Calculate the total power of the composition for the use of one or more power supply units	power supply unit 100W	connector (per 1 composition up to 2 power supply units)	radio control kit with brightness setting (1 per power supply unit) optional	DALI kit (for DOMOTICA) n. 1 for each power supply unit cannot be used with radio remote control	Power per LED	
					mm	W
	EAL1	ECO1	EKRR1	EKDA1	450	2,7
	286	42	264	99	600	3,6
					750	4,5
					900	5,4
					1800	10,8
					K 2700	

Modules

H 1230 - 48 3/8" wall-mounted

Notes

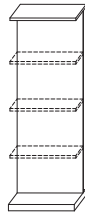
No reductions of any kind are possible.
With modules H 1230, the change in height is provided for by combining two compositions.
With 3D matt lacquer fronts the top on the unit is matt lacquer.

Structure

Wall-mounted H 1210 - 47 5/8"
D 500 - 19 5/8"

price does not include shelf

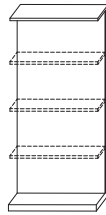
W 450 - 17 3/4"



matt lacquer base wood base

MOA0412

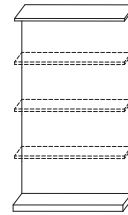
W 600 - 23 5/8"



matt lacquer base wood base

MOA0612

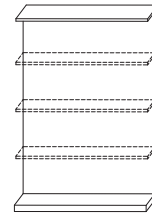
W 750 - 29 1/2"



matt lacquer base wood base

MOA0712

W 900 - 35 3/8"



matt lacquer base wood base

MOA0912

back panel

	MOA0412		MOA0612		MOA0712		MOA0912	
matt lacquer colours	433	473	501	549	571	628	641	708
glossy lacquer colours	572	612	685	733	802	859	919	986
wood	504	544	592	640	682	739	773	840
bronze mirror	515	555	594	642	677	734	759	826
BLEND fabric	505	545	564	612	687	744	750	817
supplementary cost for LED cover	27	27	34	34	40	40	47	47

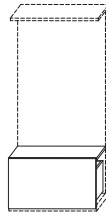
Front with drawer

W 450 - 17 3/4"



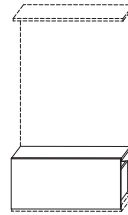
CAN0412A

W 600 - 23 5/8"



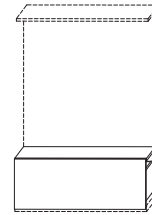
CAN0612A

W 750 - 29 1/2"



CAN0712A

W 900 - 35 3/8"



CAN0912A

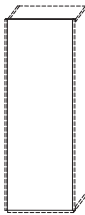
shelf and drawer front

	CAN0412A	CAN0612A	CAN0712A	CAN0912A
matt lacquer colours	379	397	437	468
3D matt lacquer colours	394	412	477	505
glossy lacquer colours	476	540	618	687
wood	464	501	556	610

Front: hinged door, wood or glass

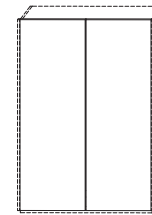
The glass door profile is available in pewter colour and iris finishes

W 450 - 17 3/4"



AB0412

W 900 - 35 3/8"









AB0912

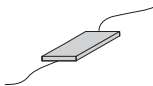
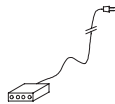

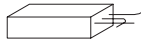
	AB0412	AB0912
matt lacquer colours	340	680
3D matt lacquer colours	415	830
glossy lacquer colours	597	1.194
wood	468	936
extra-clear transparent glass	531	1.062
transparent / bronze / silver stopsol glass	570	1.140

Notes

LEDs cannot be fitted with the 8 cm thick glass shelf.

Shelves glass th 8 - 3/8" wood th 14 - 1/2" glass with profile th 14 - 1/2"	W 450 - 17 3/4"	W 600 - 23 5/8"	W 750 - 29 1/2"	W 900 - 35 3/8"
The glass shelf profile th 14 - 1/2" is available in pewter colour and iris finish				
	RIA04	RIA06	RIA07	RIA09
extra clear glass th 8	74	82	92	102
matt lacquer colours	124	130	149	155
glossy lacquer colours	160	187	224	246
wood	189	202	223	239
with profile th 14 - extra clear glass	239	253	274	280
supplementary cost for shelf LED	38	47	57	67

Wood side panels th 14 - 1/2"	H 1210 - 47 5/8" central	H 1210 - 47 5/8" side
		
	SPAC12	SPAL12
matt lacquer colours	376	376
wood	496	496

LED accessories	power supply unit 100W	connector (per 1 composition up to 2 power supply units)	radio control kit with brightness setting (1 per power supply unit) optional	DALI kit (for DOMOTICA) n. 1 for each power supply unit cannot be used with radio remote control	Power per LED												
Calculate the total power of the composition for the use of one or more power supply units					<table border="1"> <thead> <tr> <th>mm</th> <th>W</th> </tr> </thead> <tbody> <tr> <td>450</td> <td>2,7</td> </tr> <tr> <td>600</td> <td>3,6</td> </tr> <tr> <td>750</td> <td>4,5</td> </tr> <tr> <td>900</td> <td>5,4</td> </tr> <tr> <td>1800</td> <td>10,8</td> </tr> </tbody> </table>	mm	W	450	2,7	600	3,6	750	4,5	900	5,4	1800	10,8
mm	W																
450	2,7																
600	3,6																
750	4,5																
900	5,4																
1800	10,8																
	EAL1	ECO1	EKRR1	EKDA1	K 2700												
	286	42	264	99													

Logos

TV module for wall-mounted compositions

In the Logos system, a TV module is available for mounting televisions up to 75 inches.

Two TV module versions are available:

- With lower drawers (TVs up to 65 inches)
- Open (TVs up to 75 inches)

The TV stand module can be used in the centre or to the side in combination with other modules, or individually, closed in with side panels.

Notes

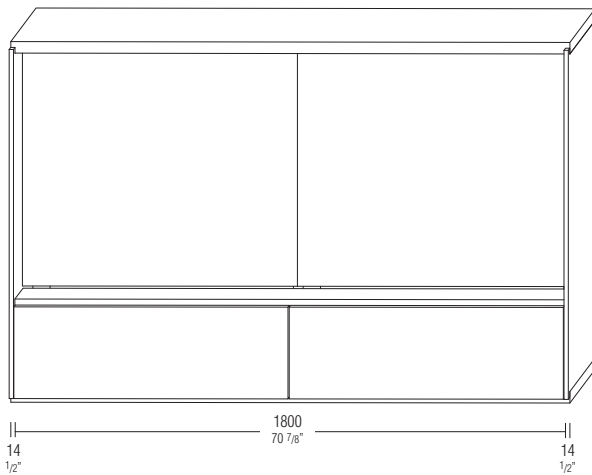
No reductions of any kind are possible.

With TV modules, the change in height is provided for by combining two compositions. The version with lower drawers always includes a th 40 central shelf, available in the finishes of the top.

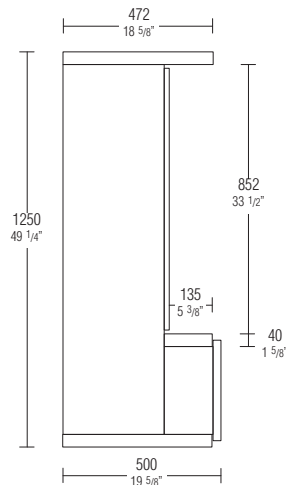
Not available with glass side panels.

The TAPE compartment can be used in the drawers (as shown in the diagram on page 7), adding the price of the shelf and TV receiver.

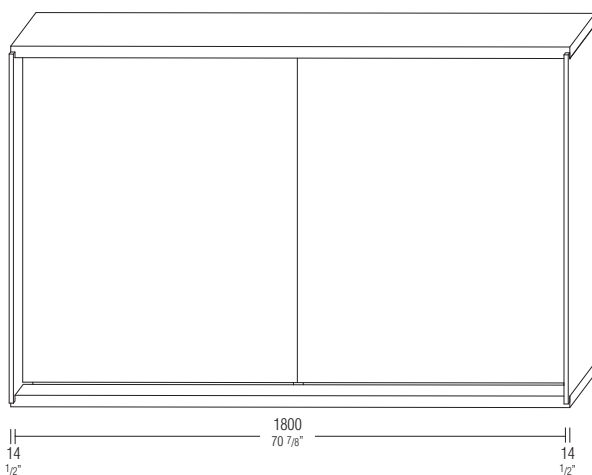
Version with lower drawers



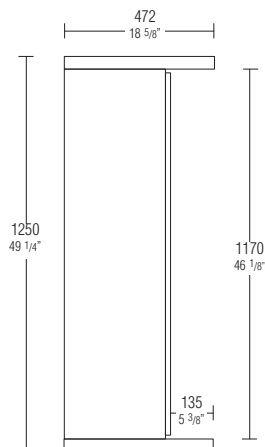
SIDE SECTION



Open version



SIDE SECTION

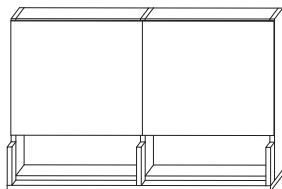


TV module
H 1230 - 48 3/8" wall-mounted

TV module structure
H 1210 - 47 5/8" wall-mounted
D 500 - 19 5/8"

price excluding
side or central
panels th 14 - 1/2"

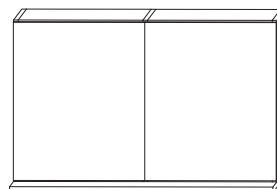
W 1800 - 70 7/8"
for inserting drawers



matt lacquer base wood base

MTA1812A

W 1800 - 70 7/8"
open



matt lacquer base wood base

MTA1812B

back panel

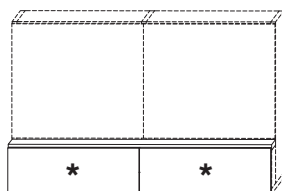
matt lacquer colours
wood
BLEND fabric

2.253	2.379
2.443	2.569
2.477	2.603

2.214	2.340
2.476	2.602
2.496	2.622

Front with drawer

W 1800 - 70 7/8"



matt lacquer front 3D matt lacquer front glossy lacquer front wood front

CTV1803A

central top th 40 - 1 5/8"

matt lacquer colours
wood
emperador dark / black marquina marble
Sahara noir / calacatta / red lepanto marble
breccia capraia marble
*TAPE compartment shelf
*TV signal transceiver (ETV1L)

834	908	1.112	980
908	982	1.186	1.054
1.317	1.391	1.595	1.463
1.531	1.605	1.809	1.677
1.676	1.750	1.954	1.822
243	243	243	243
434	434	434	434

Wood side panels th 14 - 1/2"

H 1210 - 47 5/8"
TV module sides



SPTL12

matt lacquer colours
wood

262
383

Logos

The Logos compositions must be completed with a finishing top.

Two versions of top are available:

- Single material th 40
- Metal frame with inserts

The tops can be equipped with a wire hole in the same finish.

The position of the wire hole is always at the centre of the underlying module to be wired, in both the monochrome version and the version with a metal frame.

See options on page 6 for inserting the TAPE compartment.

Notes

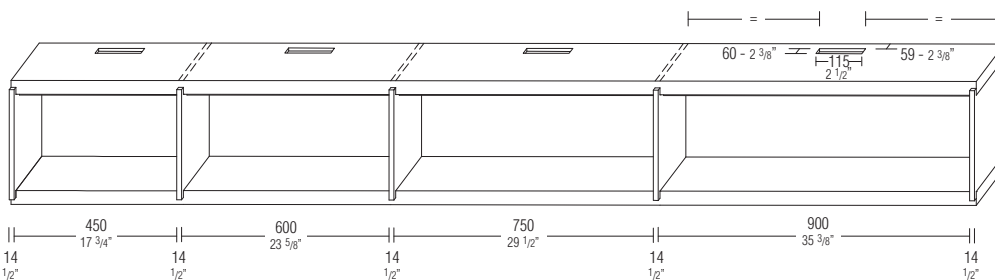
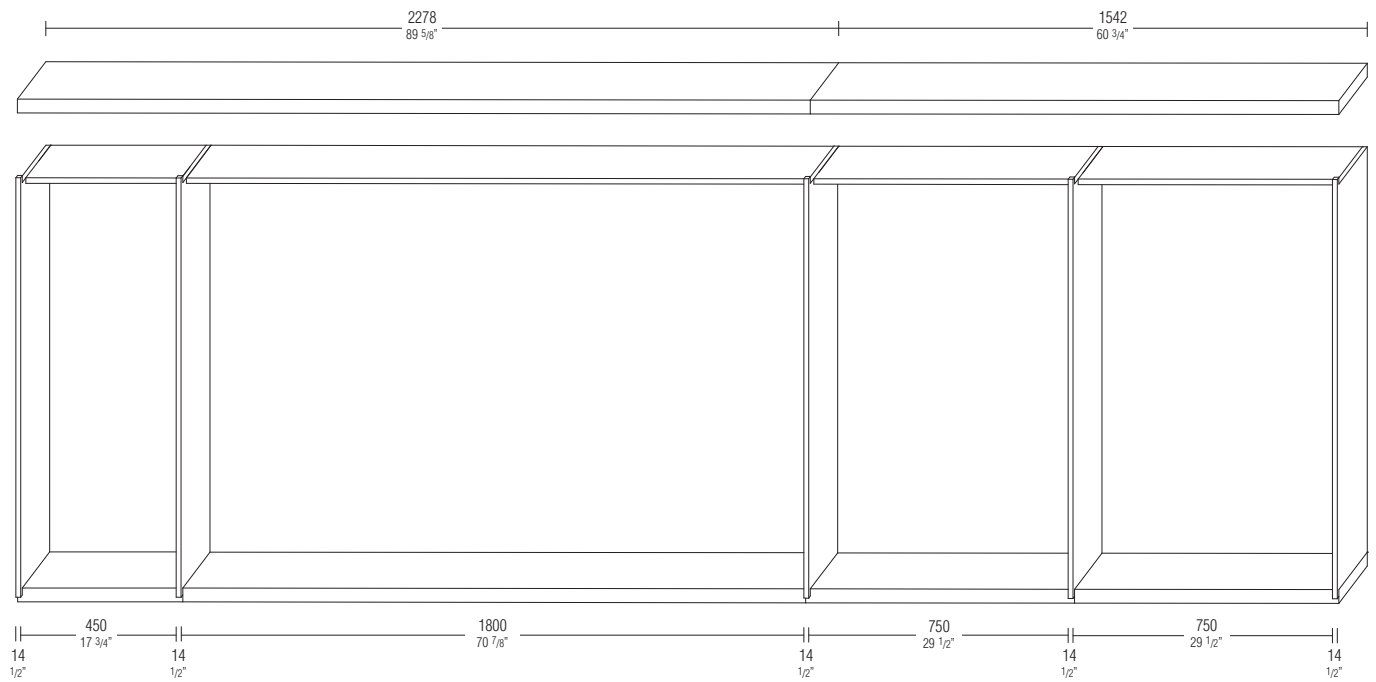
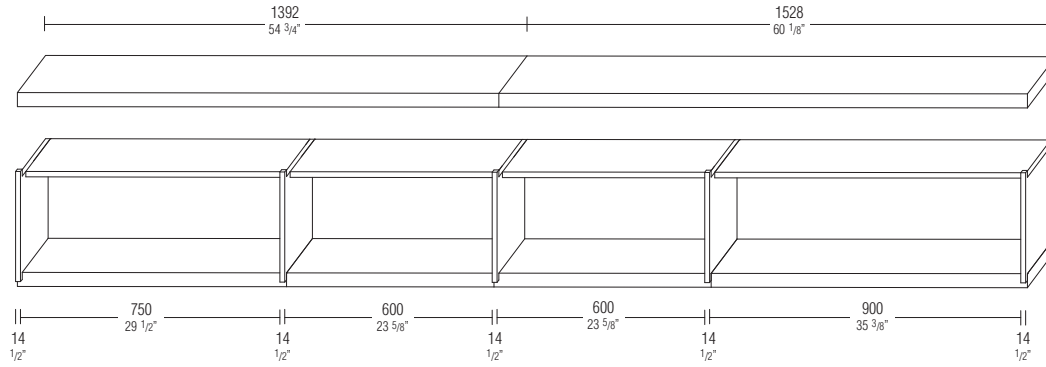
In both versions, the top is made of a single piece up to W 2934 mm.

In compositions larger than W 2934 mm, the top must always be joined at a side panel.

The joint should be made at the side panel closest to the centre of the composition.

Due to the construction method, the joint in the frame version is visible only on the front edge.

The single material marble top th 40 cannot be used in wall-mounted compositions.



Logos

Finishing top
single material th 40 - 1 5/8"

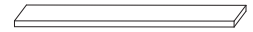
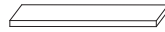
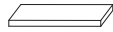
Notes
The single material marble top th 40 cannot be used in wall-mounted compositions.

Single material top
th 40 - 1 5/8"
D 500 - 19 5/8"

Up to
W 628 - 24 3/4"

from W 629 - 24 3/4"
to W 1242 - 48 7/8"

from W 1243 - 48 7/8"
to W 1870 - 73 5/8"

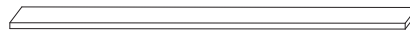
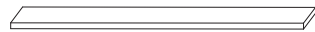


	TOM06	TOM12	TOM18
matt lacquer colours	158	258	355
wood	214	362	508
emperador dark / black marquina marble	812	1.177	1.766
Sahara noir / calacatta / red lepanto marble	1.058	1.674	2.516
breccia capraia marble	1.225	1.985	2.983

Single material top
th 40 - 1 5/8"
D 500 - 19 5/8"

from W 1871 - 73 5/8"
to W 2470 - 97 1/4"

from W 2471 - 97 1/4"
to W 2934 - 115 1/2"



	TOM24	TOM29
matt lacquer colours	446	518
wood	646	755
emperador dark / black marquina marble	2.330	2.767
Sahara noir / calacatta / red lepanto marble	3.320	3.943
breccia capraia marble	3.937	4.676

Wire hole



	EPA6
matt lacquer colours	66
wood	66
marble	136

**Finishing top
with frame th 40 - 1 5/8"**

Frame th 40 - 1 5/8"
D 500 - 19 5/8"

**Up to
W 628 - 24 3/4"**

from W 629 - 24 3/4"
to W 1242 - 48 7/8"

from W 1243 - 48 7/8"
to W 1870 - 73 5/8"



TOT06

264



TOT12

371



TOT18

493

pewter colour / iris

Frame th 40 - 1 5/8"
D 500 - 19 5/8"

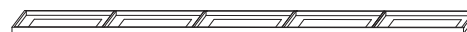
from W 1871 - 73 5/8"
to W 2470 - 97 1/4"

from W 2471 - 97 1/4"
to W 2934 - 115 1/2"



TOT24

584



TOT29

683

pewter colour / iris

Insert th 20 - 3/4"

W 450 - 17 3/4"

W 600 - 23 5/8"

W 750 - 29 1/2"

W 900 - 35 3/8"



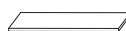
TIN04

97



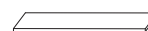
TIN06

117



TIN07

138



TIN09

158

matt lacquer colours

wood

emperador dark / black marquina marble

Sahara noir / calacatta / red lepanto marble

breccia capraia marble

150

338

451

536

117

183

392

546

658

138

219

446

642

780

158

257

500

737

906

Wire hole



EPA6

matt lacquer colours

wood

marble

66

66

136

Logos

Bases H 210 - 8 1/4"

With Logos, the compositions can be created on a base H 210 mm equipped with adjustable feet to allow for perfect support on the floor.

Notes

Compositions with a base can have a maximum size of 2934 mm.

Bases D 500 - 19 5/8"

For compositions W 628 - 24 3/4"

For compositions from W 629 - 24 3/4" to W 1242 - 48 7/8"

For compositions from W 1243 - 48 7/8" to W 1870 - 73 5/8"



BS06

BS12

BS18

pewter colour / iris

604

669

713

Bases D 500 - 19 5/8"

For compositions from W 1871 - 73 5/8" to W 2470 - 97 1/4" with 1 central foot

For compositions from W 2471 - 97 1/4" to W 2934 - 115 1/2" with 1 central foot



BS24

BS29

pewter colour / iris

822

848

LOGOS
APRIL 2024